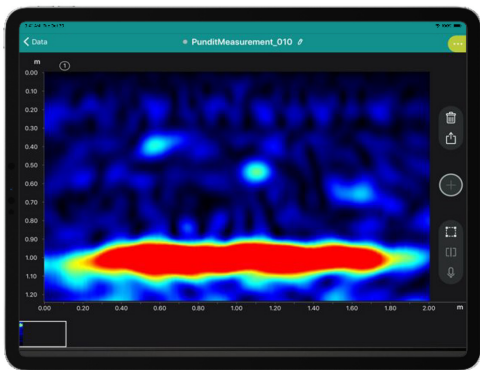


# Pundit® Live Array Pro



PD8000

---

**Structural concrete evaluation and imaging** using enhanced ultrasonic pulse echo technology

---



## Performance

Unmatched sharpness, precision, stability and depth penetration thanks to revolutionary image focusing paired with sophisticated real-time algorithms.



## Future readiness

Extendable probe powered by the future-oriented software smartly complements your Proceq GPR to expand your inspection capabilities.



## Productivity

Ultimate peace of mind delivered by on-site A.I.-assisted positioning and data interpretation. Get to your insights fast with immediate visualization, including 3D and AR.

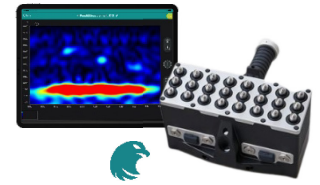
# Pundit® Live Array



Pundit® 250 Array



Pundit® PD8000 Basic



Pundit® PD8000 Pro

	Pundit® 250 Array	Pundit® PD8000 Basic	Pundit® PD8000 Pro
<b>Visualization features</b>			
High definition focus view			•
Local focusing macro view			•
Augmented Reality			•
3D view		•	•
3D view with ColorDepth			•
A.I.-assisted positioning		•	•
A.I.-assisted feature interpretation			•
A.I.-assisted material identification			•
Image stabilization			•
Ultrasonic Pulse Velocity from one Side		•	•
<b>Cloud features</b>			
Cloud synchronisation		•	•
Cloud sharing via URL		•	•
Cloud-enabled Logbook		•	•
Cloud-based raw data export		•	•
Cloud-based HTML-data export			•
Cloud-based report generation			•
<b>Measurement modes</b>			
Line Scan	•	•	•
Stripe Scan		•	•
<b>Review modes</b>			
A-scan (incl. envelope)	•	•	•
B-scan (Line view)	•	•	•
C-scan (Time-slice view)		•	•
<b>Applications</b>			
Depth range	Up to 1 m / 3 ft	1+ m / 3+ ft	2+ m / 6+ ft
Void and delamination detection	•	•	•
Bonding assessment	•	•	•
Thickness measurement		•	•
Honeycombing detection		•	•
Fiber concrete		•	•
Concrete hit prevention			•
Imaging of closely spaced rebars			•
<b>Probe</b>	Pundit® PD8000 (Multi-channel Ultrasonic Pulse Echo)		
Number of channels	8 (upgrade to 16 available)		
Frequency range	40 kHz (30 - 80 kHz)		
Dimensions / Weight / Storage capacity	240 x 273 x 153 mm (94.5 x 107.5 x 60.2 in) / 3.0 kg (6.6 lbs) / up to 1 TB		
Battery type	Removable pack, 6x AA (NiMH), flight-safe		
IP rating	IP54		
Operating temperature and humidity	-10 to 50 °C (14 to 122 °F) / <95% RH, non-condensing		
Guidelines	RI-ZFP-TU, FCC Part 15: 2010, Class A Digital Device, ZTV-ING Teil 5 Tunnelbau, ACI 228.2R-13		
<b>Display and processing unit</b>	Any iPad® (min. iOS 10)		
CPU	6-core, 64-bit		
Screen technology, type, size, and resolution	Liquid or Retina Display, LED-backlit with multi-touch and IPS technology, 7.9" to 12.9", up to 2732 x 2048 pixels and 326 ppi		
Weight	Down to 301 g / 10.6 oz		
Storage capacity	Up to 1 TB		
Connectivity	Wi-Fi® (802.11a/b/g/n), LTE/5G		
Positioning	GPS, A-GPS		
User interface languages	English, Chinese, German, Japanese, Korean		
<b>Accessories</b>	Ergonomic kit, A.I. positioning tape, Pundit PD8000 battery pack, battery set; Pundit 250 Array only: Battery complete, Quick Charger		
<b>Upgrade</b>	Pundit® PD8000 Pro	Pundit® PD8000 Pro	-
<b>Software sourcing option</b>	Purchase	Purchase	Subscription

